

LEAP Academy University
Charter School
Stakeholders
Meeting #2
January 28, 2025

Stephanie Weaver-Rogers, Lead Person

Jozian Molina, Chief Academic Officer

Tugba Hoguet, Director of Title 1

Welcome- Mrs. Hoguet

- The Stakeholders Committee is responsible for the development, monitoring, and revision of the needs assessment.
- The team will consist of a variety of education stakeholders with valuable experiences and perspectives who have agreed to work collaboratively throughout the process.

Mrs. Hoguet

→ Collectively, committee members will possess knowledge of programs, the capacity to plan and implement the needs assessment, and to keep various stakeholders involved for input, feedback, and guidance, including parents and members of the community to be served and individuals involved in implementation.

→ **The school will maintain documentation of committee membership and activity and stakeholder involvement to demonstrate compliance with all federal program requirements.**

What Funding Do We Receive and How Do We Spend it? Dr. Kane

- During the 2024-2025 School year, the federal and state government will provide LEAP with supplemental funding via the ESEA Grant, 21st Century Grant and the NJ High Impact Tutoring Grant.

How Much Will We Receive from the Federal Government for the ESEA Grant?

In 2024-2025 will receive

\$1,745,000

The LEAP Stakeholders Committee developed a Schoolwide Plan for this year and we anticipate spending our funds this year on the following:

→ Supplemental Staff-

- ◆ BSI, Paraprofessionals, College Access, and ESL

→ Programs/Materials-

- ◆ Rutgers Tutoring, STEM Summer Enrichment, Extended Year, SAT Prep, Instructional Software, Technology, and Supplemental Materials, Field Trips

→ Professional Development-

- New Staff Orientation, News ELA, Schoology, PowerSchool

→ Parent Programs, ELL

How Much Will We Receive from the Federal Gov't for 21st Century Learning Grant?

2025- \$600,000

2026- \$600,000

2027- \$600,000

2028- \$600,000

2027- \$600,000

How did we spend the funds?

- After School Grant- 3 Hours
- Grades 3 through 12
- Homework Clubs
- NJSLA and SAT/PSTA Tutoring
- Intramurals
- Focus on Parental and Families
- Health and Safety Focus
- Summer School in July

How Much Will We Receive from NJDOE and Federal Government for High Impact Tutoring (HIT)?

In 2024-2025 we will receive

\$97,000

LEAP Submitted a NJDOE Competitive Grant for High Impact Tutoring for Grades 4 and 5. The Grant was Approved by NJDOE in December of 2023.

- The HIT grant pays for an outside vendor to provide tutoring during the day for students in need
- Makeup Sessions After School
- Students are identified by test results
- Vendor selected from State Required Bidding Process

LEAP Smart Goals for 2024-2025

The LEAP Stakeholders Committee developed the Schoolwide Plan and agreed to the following Smart Goals for 2023-2024.

MLL and Special Education students will demonstrate a 10% improvement in the subgroup proficiency rate for ELA on the NJSLA when compared to the latest NJSLA administration in 2024.

MLL and Special Education students will demonstrate a 10% improvement in the subgroup proficiency rate for Math on the NJSLA when compared to the latest NJSLA administration in 2024.

95% of MLL and Special Education students will successfully complete the programs offered in dual enrollment and early college courses offered by Rutgers and Rowan Universities.

Provide targeted monthly and ongoing robust professional development for teachers, instructional assistants, child study team members, administration, and long-term substitute to positively impact instructional practice and student performance on local and state assessments.

What Does the MAPS Data Tell Us?

Mr. Benito



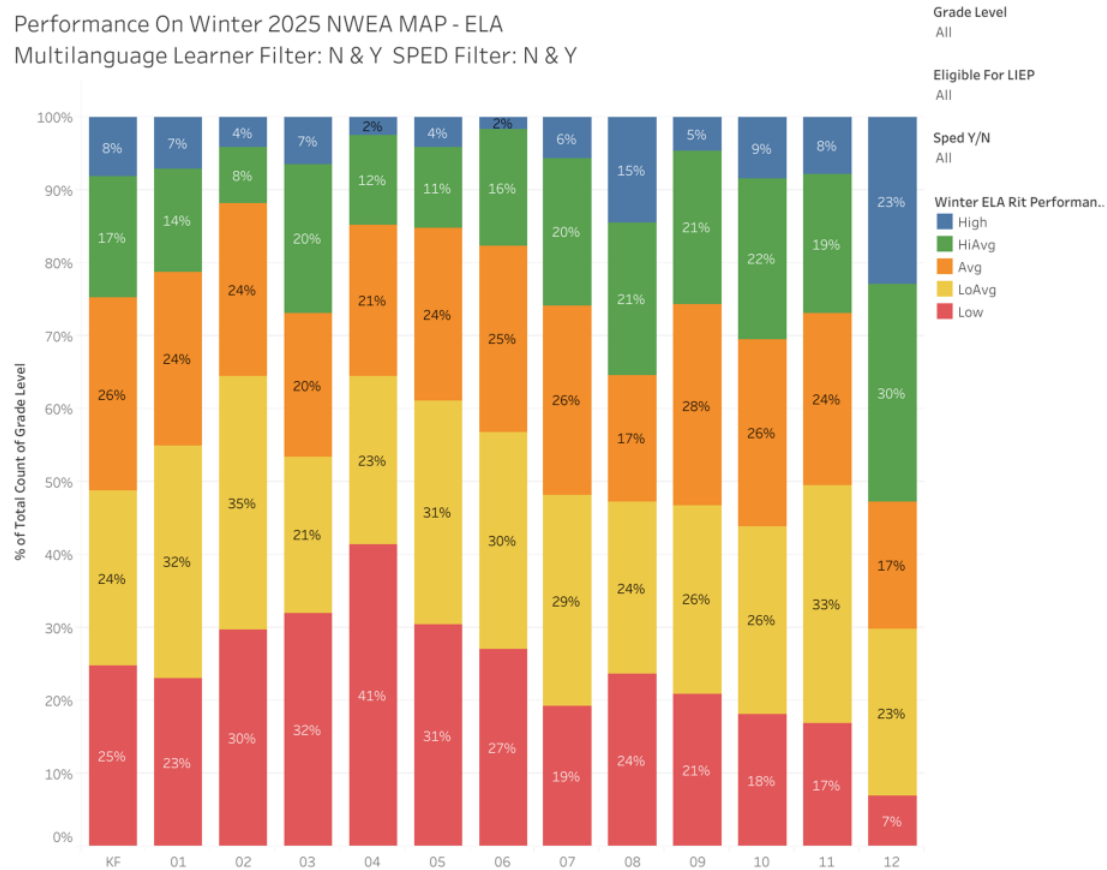
NWEA WINTER 2025 PERFORMANCE

ELA PERFORMANCE

MATH PERFORMANCE

Performance On Winter 2025 NWEA MAP - ELA

Multilingual Learner Filter: N & Y SPED Filter: N & Y



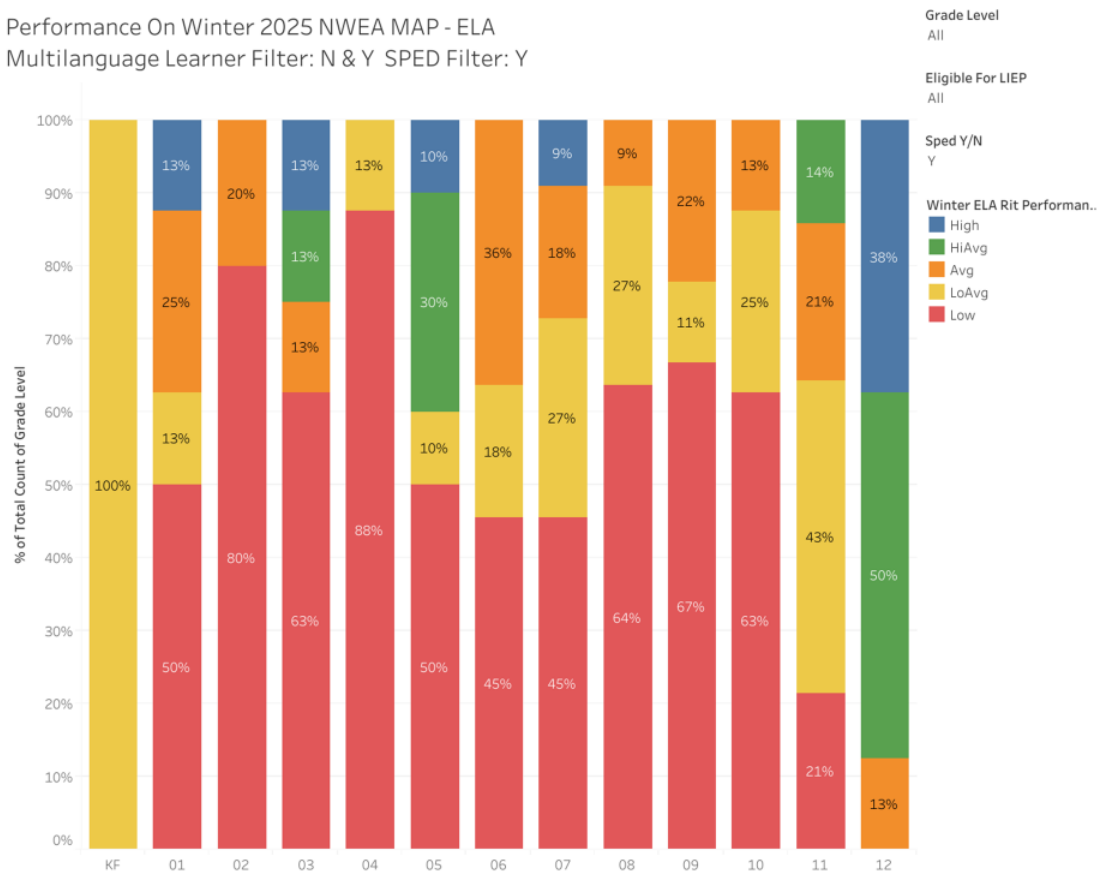
NWEA WINTER 2025 PERFORMANCE

ELA PERFORMANCE

MATH PERFORMANCE

Performance On Winter 2025 NWEA MAP - ELA

Multilingual Learner Filter: N & Y SPED Filter: Y

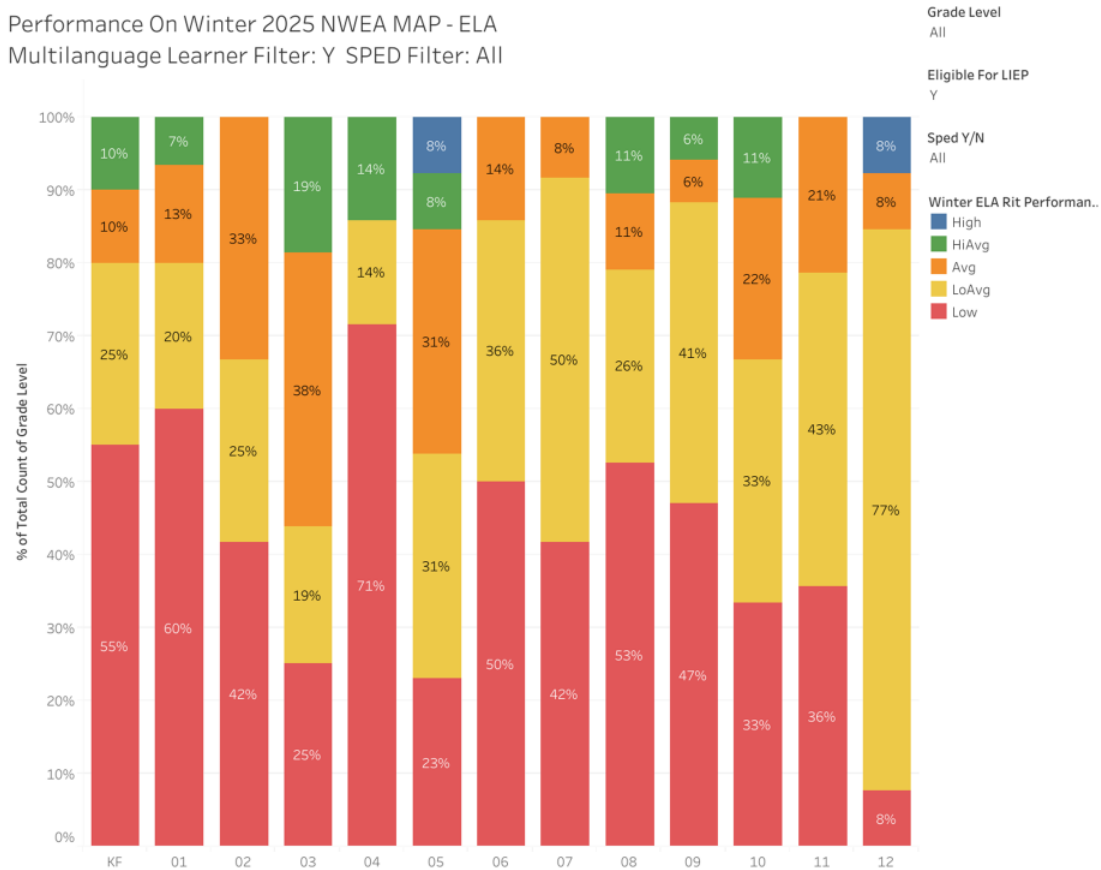


NWEA WINTER 2025 PERFORMANCE

ELA PERFORMANCE

MATH PERFORMANCE

Performance On Winter 2025 NWEA MAP - ELA
Multilingual Learner Filter: Y SPED Filter: All



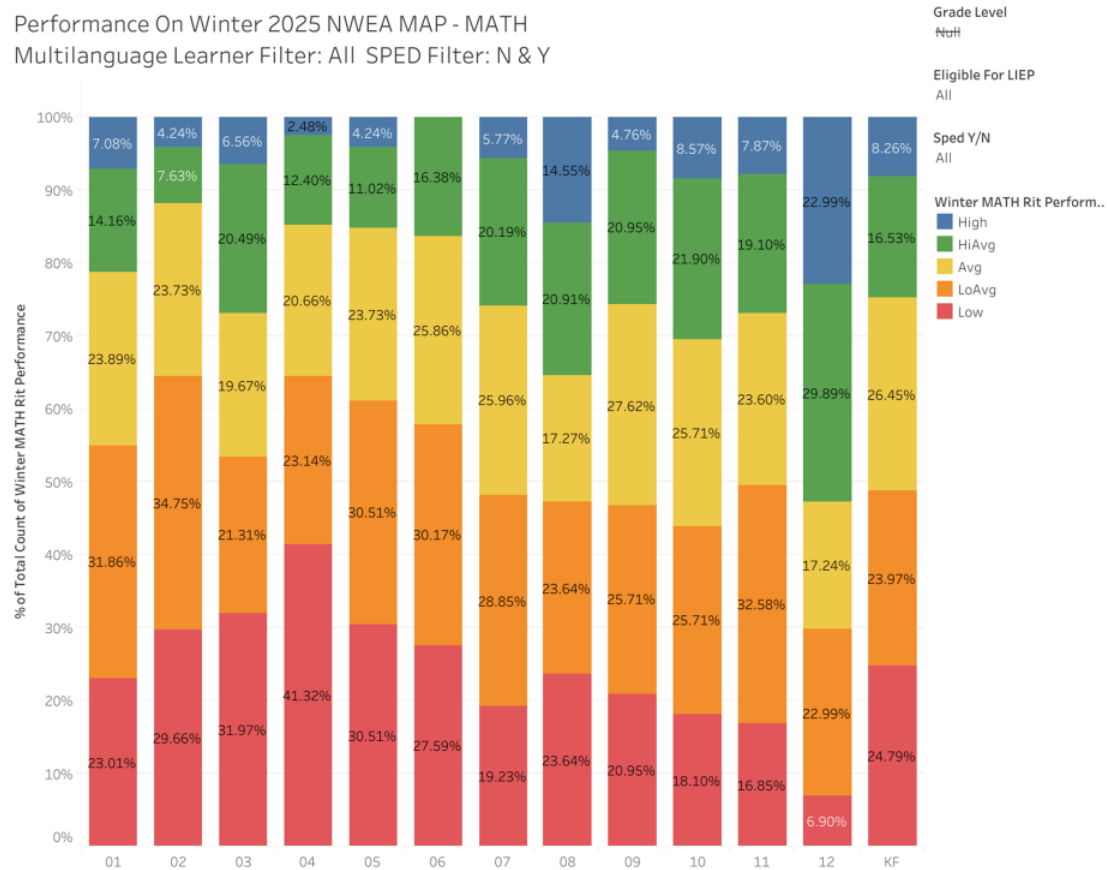
NWEA WINTER 2025 PERFORMANCE

ELA PERFORMANCE

MATH PERFORMANCE

Performance On Winter 2025 NWEA MAP - MATH

Multilingual Learner Filter: All SPED Filter: N & Y

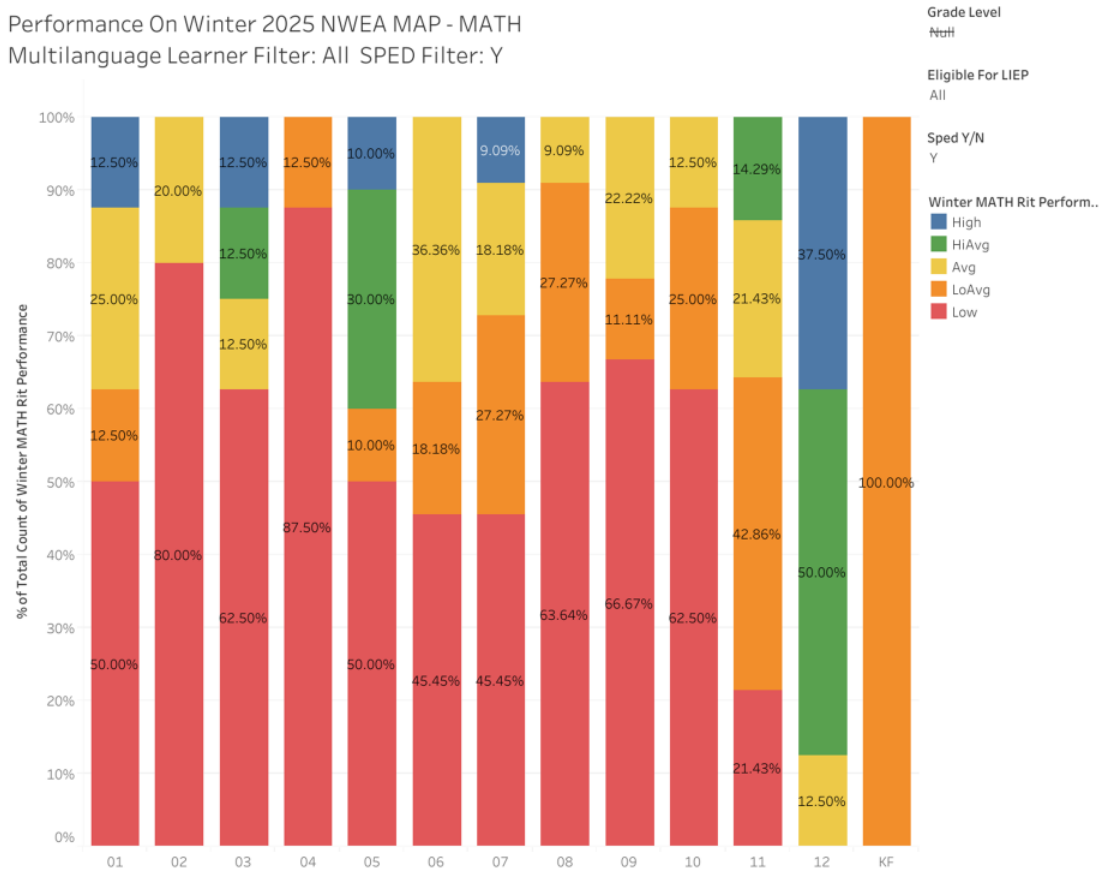


NWEA WINTER 2025 PERFORMANCE

ELA PERFORMANCE

MATH PERFORMANCE

Performance On Winter 2025 NWEA MAP - MATH
Multilingual Learner Filter: All SPED Filter: Y



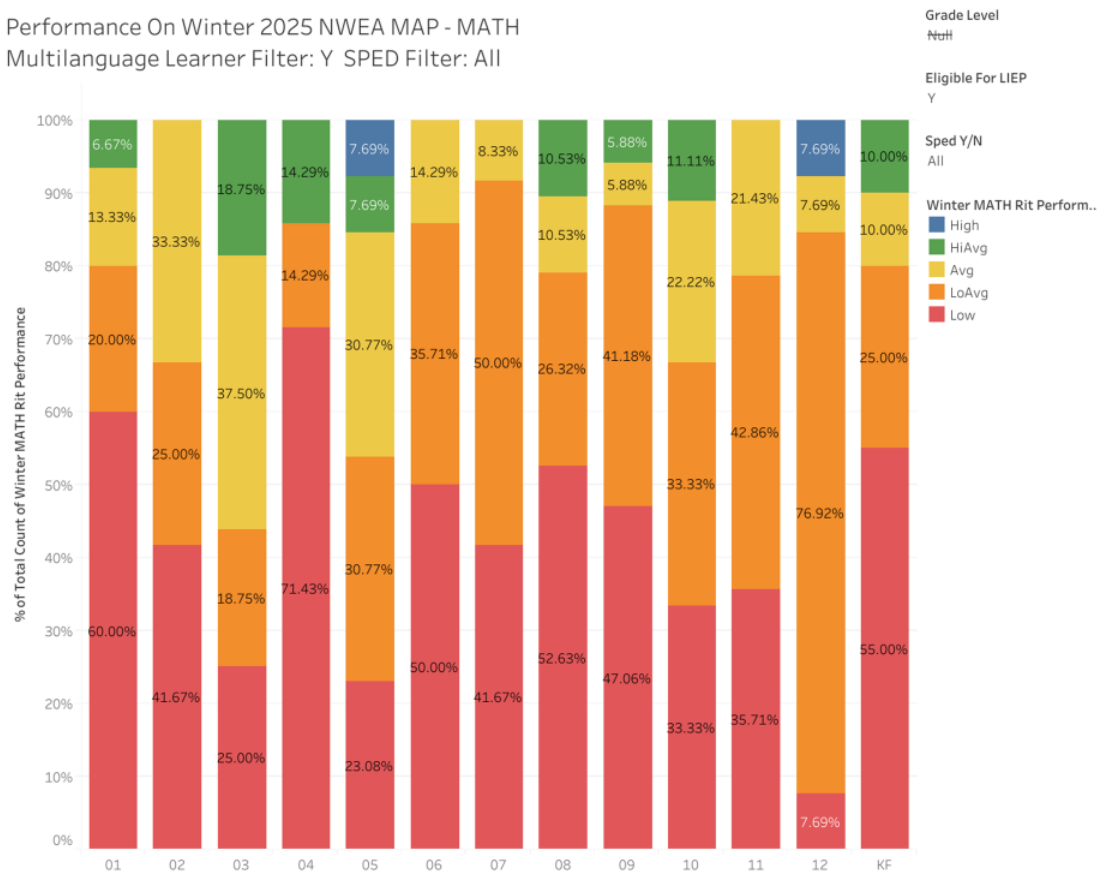
NWEA WINTER 2025 PERFORMANCE

ELA PERFORMANCE

MATH PERFORMANCE

Performance On Winter 2025 NWEA MAP - MATH

Multilingual Learner Filter: Y SPED Filter: All



NWEA MAP GROWTH

Average Percentile Growth From Fall 2024 to Winter 2025

Average of Winter ELA Growth Percentile			
Grade	All Students	SPED	ML
KF	46	65	34
1	40	46	37
2	36	24	36
3	38	28	49
4	37	41	35
5	43	50	51
6	57	86	48
7	56	30	57
8	59	40	46
9	58	47	59
10	49	30	44
11	47	59	35
KF	46	65	34
Grand Total	47	47	45

Average of Winter MATH Growth Percentile			
Grade	All Students	SPED	ML
KF	59	14	58
1	44	30	46
2	51	70	43
3	59	52	56
4	39	35	42
5	53	47	53
6	50	51	53
7	78	64	66
8	62	69	60
9	52	62	53
10	53	15	48
11	42	27	45
12	0	0	0
Grand Total	50	42	47

LEAP Curriculum and Professional Development Update for November, December, and January

Ms. Molina

Professional Development Offerings

November (½ day)

- Synthesizing Professional Development for Engaging Lessons
- ESL Curriculum Review and Lesson Planning for Engaging Lessons

December (full day)

- Tools of the Mind
- Empowerment Perspective
- Empowering Classrooms Through Transformative Instruction Finish Strong, Start Stronger: Igniting Minds and Hearts

Professional Development Offerings

January 10 (½ day)

- Tools of the Mind: Centers and Guided Reading
- Unit 2 Launch Planning
- Launching into WIDA Access Prep

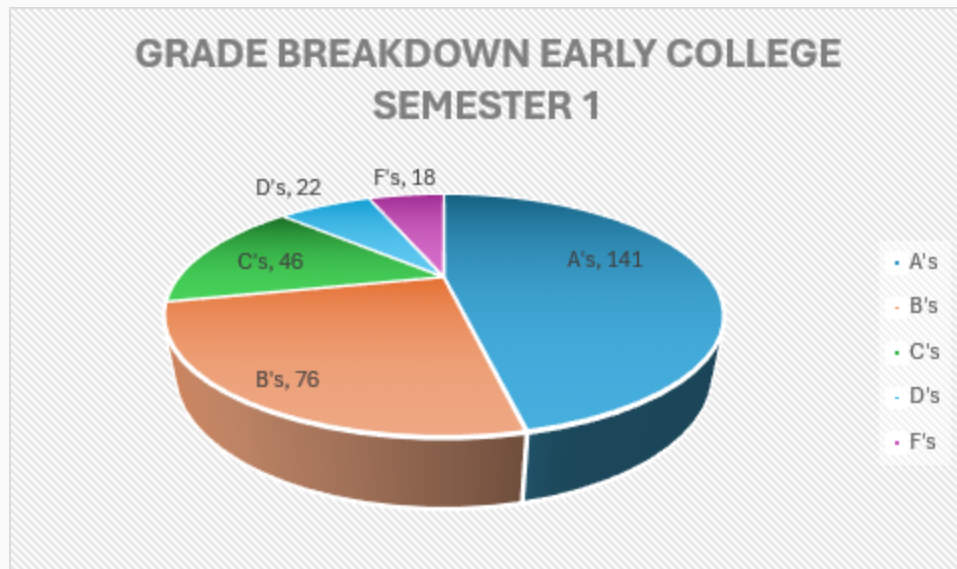
January 24 (full day)

- Flexible Grouping and Tiered Tasks
- Analyzing Data to Drive Achievement
- WIDA Standards for MLLs
- SIOP Training with Up the Bar

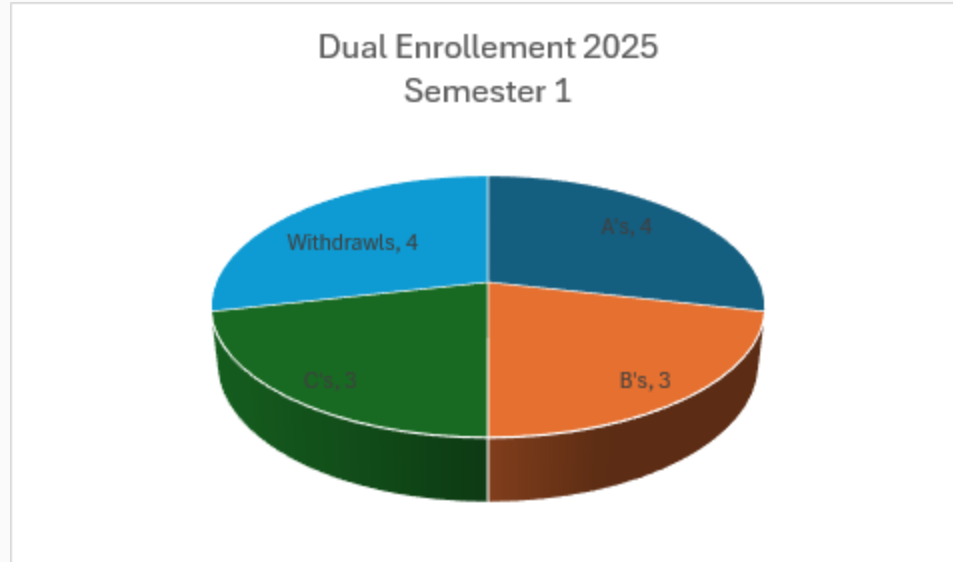
LEAP Semester #1 Data for Dual Enrollment and Early College for Students and Subgroups

Ms. Molina

Early College S1 Grade Distribution



Dual Enrollment S1 Grade Distribution



Questions and Comments?

We Just Want
to Say Thank
you!

Our Next Meeting
Will Be Held in April
2025

